

Dear Customer!

# Loudlink

LLK-A08  
LLK-B08  
LLK-A09  
LLK-B09

## Installation Guide



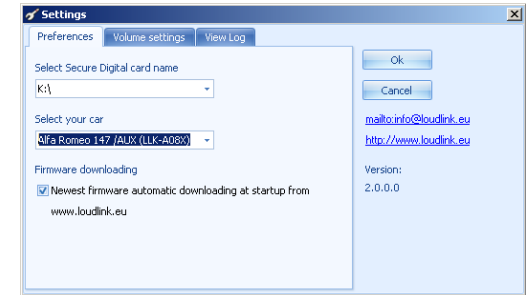
Thank You for purchasing Loudlink products! We hope You will be satisfied, since Your satisfaction is our primary objective.

What you need for Loudlink installation

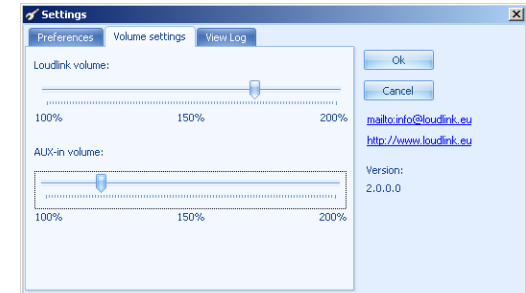
- Loudlink SSD Changer
- SD card (any size SD, SDHC with FAT16 / FAT32 filesystem)
- CD Changer cable – if not factory fitted already
- An optional AUX-in cable with 3.5mm stereo Jack plug if You would like to use AUX-in function, and You bought „X” postfixed version.

## SD Card prepare

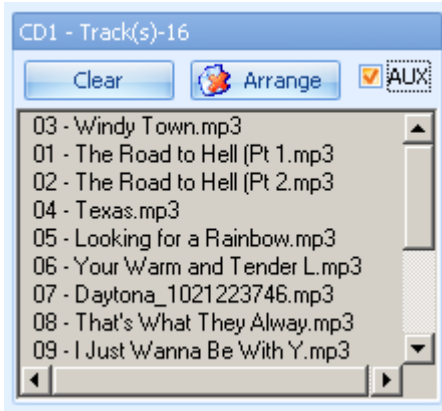
You can prepare your SD card by using Loudlink Explorer Toolkit, or manually. With Loudlink Explorer Toolkit You can set automatic firmware downloading,



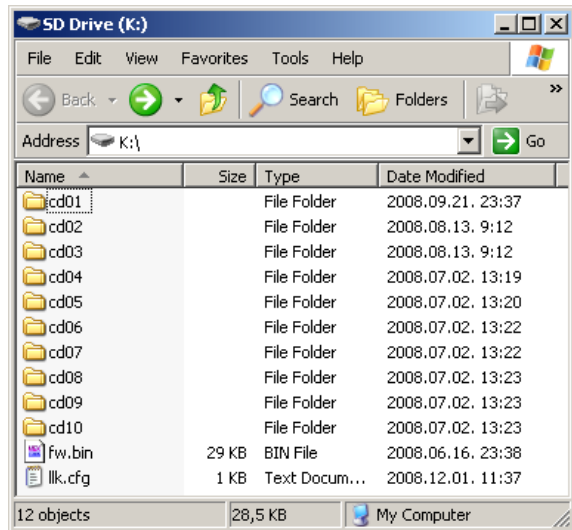
and You also can adjust Loudlink / AUX-in volumes.



Checking AUX checkbox at the desired CD will enable AUX-in when You select desired CD on the head unit.



In case of manual prepare, make cd01...cd06 folders with *lowercase* letters. It is highly recommended to update Loudlink with the newest available firmware.



### **Firmware upgrade**

You have to unpack the downloaded firmware then copy the new firmware file („fw.bin”) to the root of the SD card!

**Important:**  
Firmware upgrade process works only on SD cards that are maximum 2Gbyte!

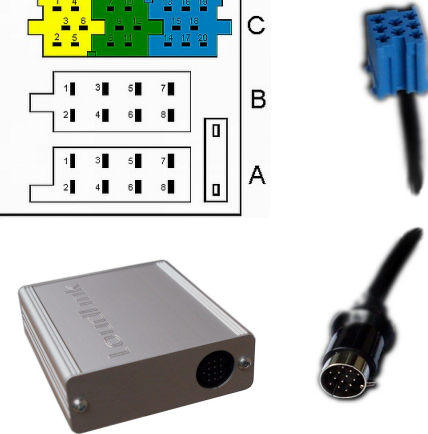
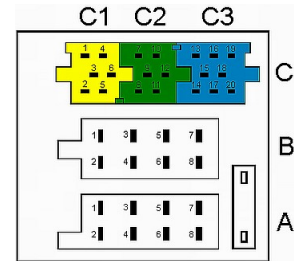
During normal operation You can use any size SD, SDHC cards.

Firmware upgrade process starts automatically when Loudlink goes stand-by and newer firmware version is detected on the SD card. After few seconds of red/green fast after slow LED toggling update has finished, and LED goes off. This means the device is in stand-by, and the update was succesful.

### **Cable installation**

If CD Changer cable is not installed already in Your car, You need to remove the head unit. This process requires special tools. We highly recommend you to go to an authorized garage, where professionals can remove the head unit and afterwards connect the cable.

If You are able to remove head unit, just simply connect the blue „Mini-ISO” connector to the socket of the back side of the head unit.



You are finished! Enjoy the sound! Have great miles!

Loudlink Team